

Scope with us!



SEAWise scoping workshop

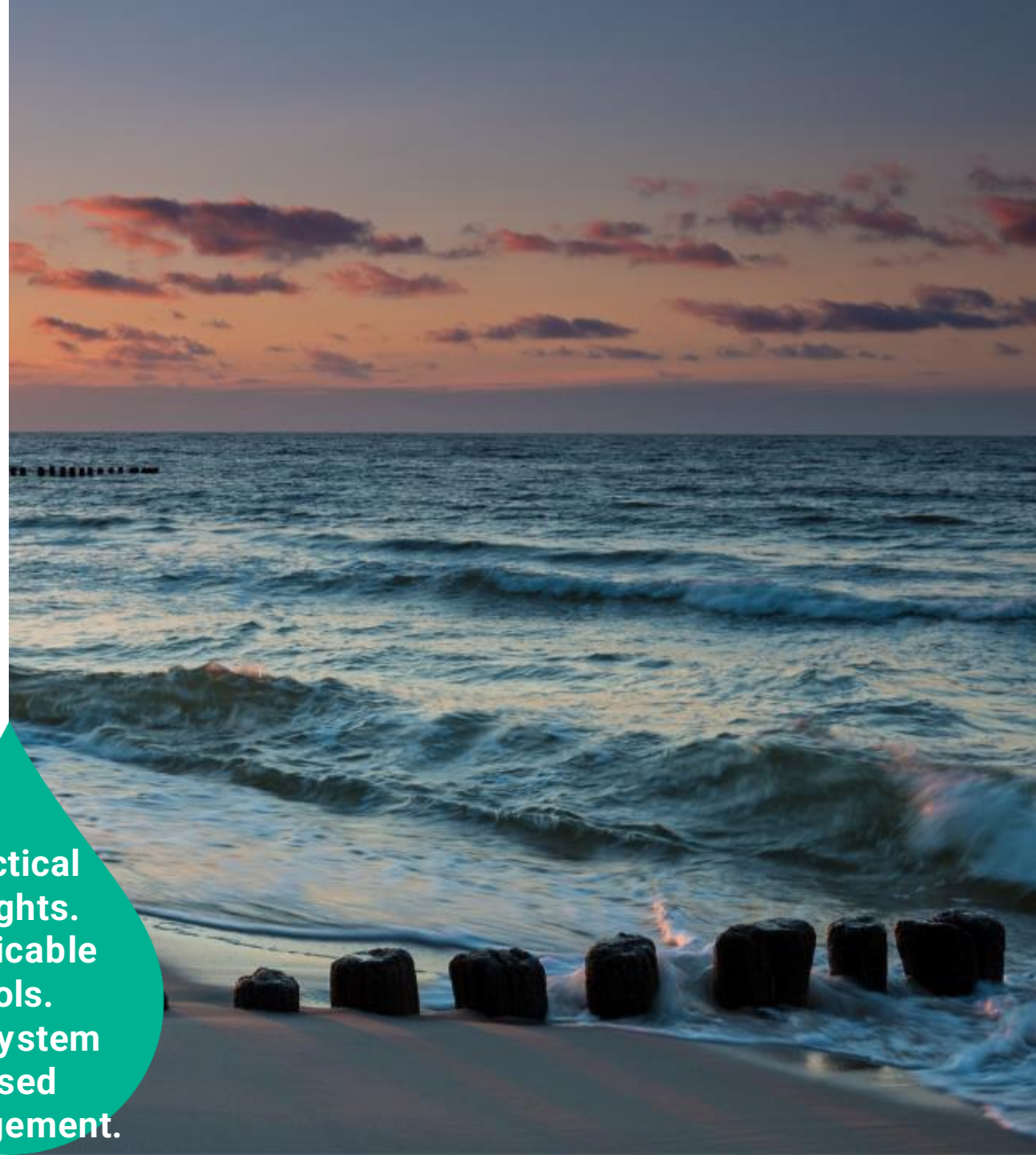
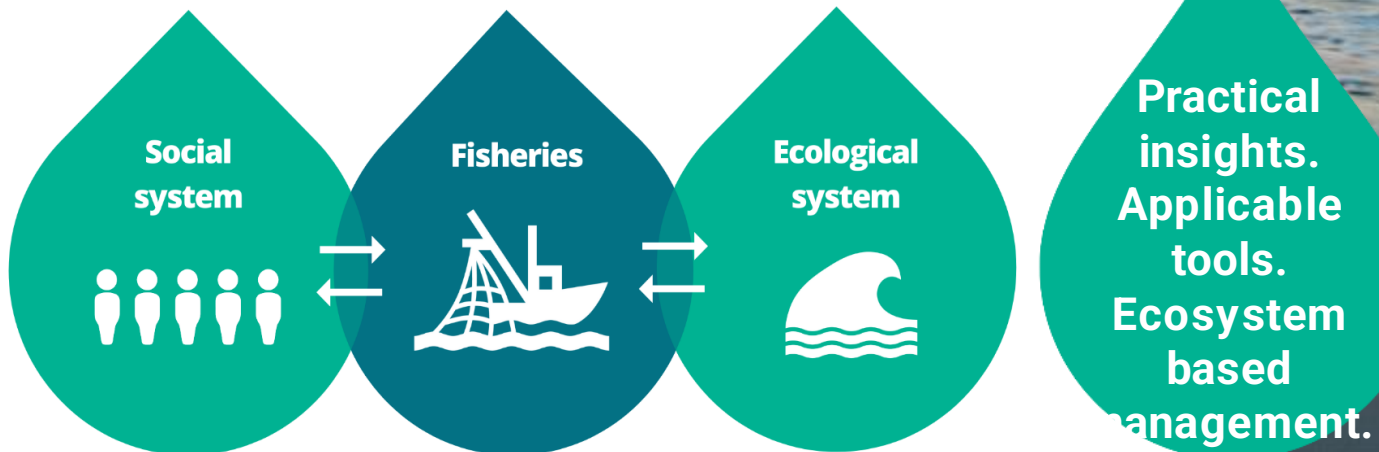
SEAWise has received funding from the European Union's Horizon 2020 research and innovation programme under grant agreement No 101000318



# How do I contribute to the scoping and why?

We'd like your help to determine what the most important components are in ecosystem based advice for social and ecological systems and how they interact.

There are no wrong answers – it is all about finding out what you and others think is important



# How do I contribute?

- Think about your ecosystem and select one of slides 4-7.
- Think about who you are. Do you self-identify most as scientist, NGO, industry or interested citizen? Write the reply on the slide.
- Think about the things in your ecosystem. Make a list of items that you would like to get ecosystem based advice on for this ecosystem.
- Put these items onto your map as text boxes or pictures from slide 8. Alternatively, draw on paper and take a photo. If using icons or drawings, please write next to them what they mean.
- Choose arrows to show important connections between the items
- Take a screen shot, save the presentation or take a photo and email it to [ar@aqua.dtu.dk](mailto:ar@aqua.dtu.dk)

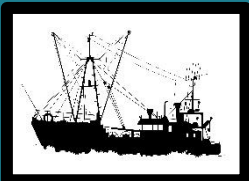


**End-user  
driven  
advice**



**My advice base.**

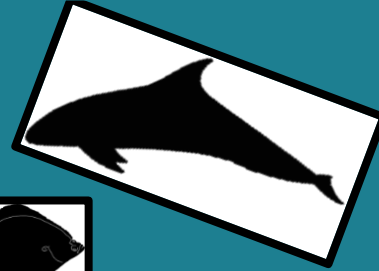
**I selfidentify as:**



Your idea here



Your idea here



Your idea here

Your idea here

Your idea here



MPA



Your idea here

LOCAL

