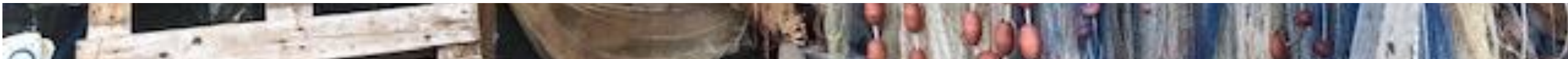




Co-founded by the  
European Union

# Trends of some socioeconomic indicators of fishery sector in the Mediterranean Sea

Edited by Prof. Giulio Malorgio and Antonio Pucillo  
In collaboration with the MEDAC Secretariat



## Methodological aspects



**Analysis area:** Cyprus, Croatia, France, Greece, Italy, Malta, Slovenia, Spain

**Data source:** Scientific, Technical and Economic Committee for Fisheries (STECF) “**The 2016 Annual Report on the EU Fishing Fleet**”.

# Main Regulations related to fishery management during the timeframe considered in the time series

**Council Regulation (EC) No 1967/2006 concerning management measures for the sustainable exploitation of fishery resources in the Mediterranean Sea**

of 21 December **2006**

**Common Fisheries Policy**

**REG. (EU) No 1380/2013 OF THE EU PARLIAMENT AND OF THE COUNCIL**

of 11 December **2013**

**Conservation of fisheries resources and the protection of marine ecosystems through technical measures**

**REG. (EU) 2019/1241 OF THE EU PARLIAMENT AND OF THE COUNCIL**

of 20 June **2019**

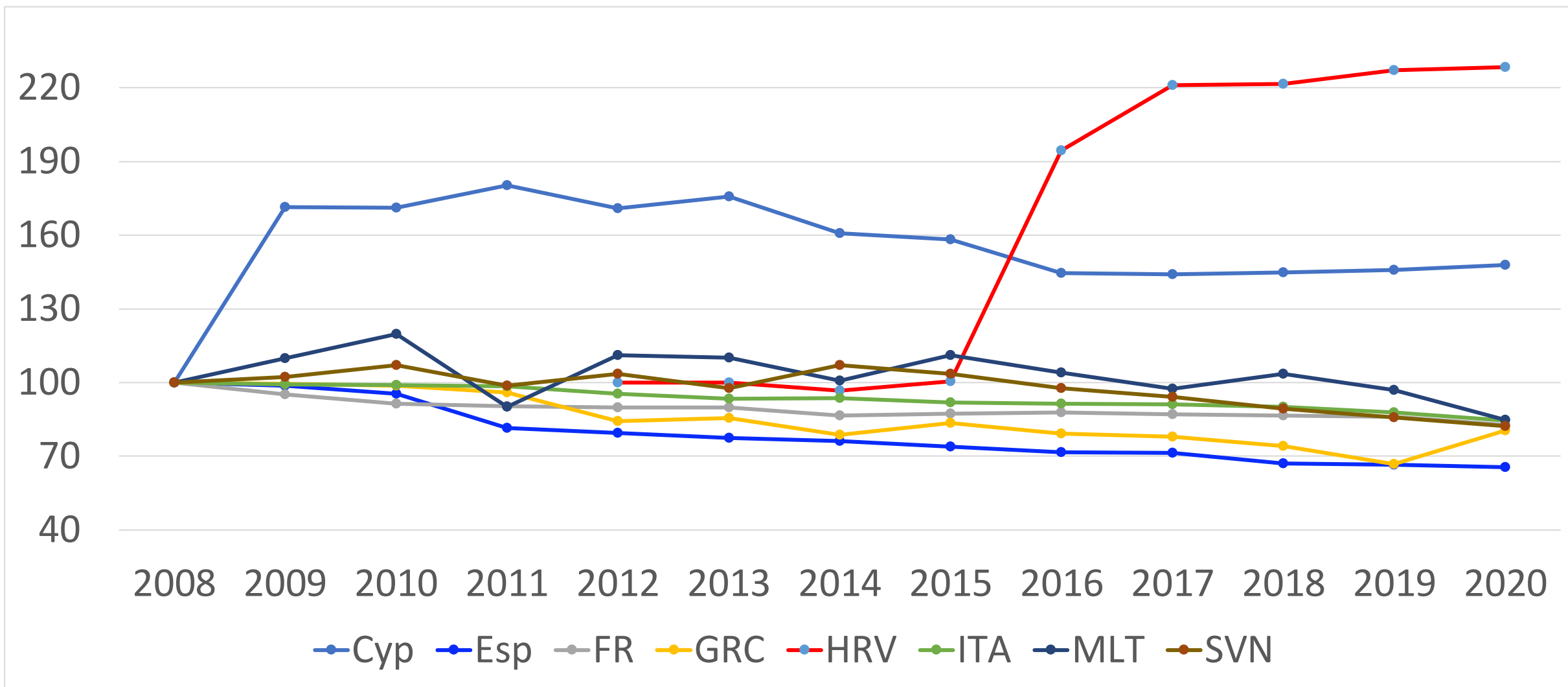
# Tab. 1. Trend of total number of vessels

Croatia: var. % 2012/20

	2008	2009	2010	2011	2012	2013	2014	2015	2016	2017	2018	2019	2020	Var % 2008/20
Cyp	1197	1177	1013	1079	1082	1001	951	905	838	799	794	858	864	<b>-28%</b>
Esp	3121	3079	2979	2542	2480	2418	2378	2306	2237	2563	2498	2401	2373	<b>-24%</b>
FR	1629	1596	1588	1572	1528	1547	1509	1503	1508	1489	1452	1418	1282	<b>-21%</b>
GRC	17248	17168	17047	16542	16063	15954	14755	15624	15182	14985	14218	14065	13893	<b>-19%</b>
HRV					4139	4290	4315	7778	7746	8349	7731	7829	7808	<b>89%</b>
ITA	13501	13342	13333	13271	12930	12733	12680	12416	12301	12260	12137	11966	11854	<b>-12%</b>
MLT	1316	1111	1112	1087	1060	1040	1045	1039	1014	935	938	911	884	<b>-33%</b>
SVN	181	185	185	186	180	171	170	169	171	172	134	138	136	<b>-25%</b>

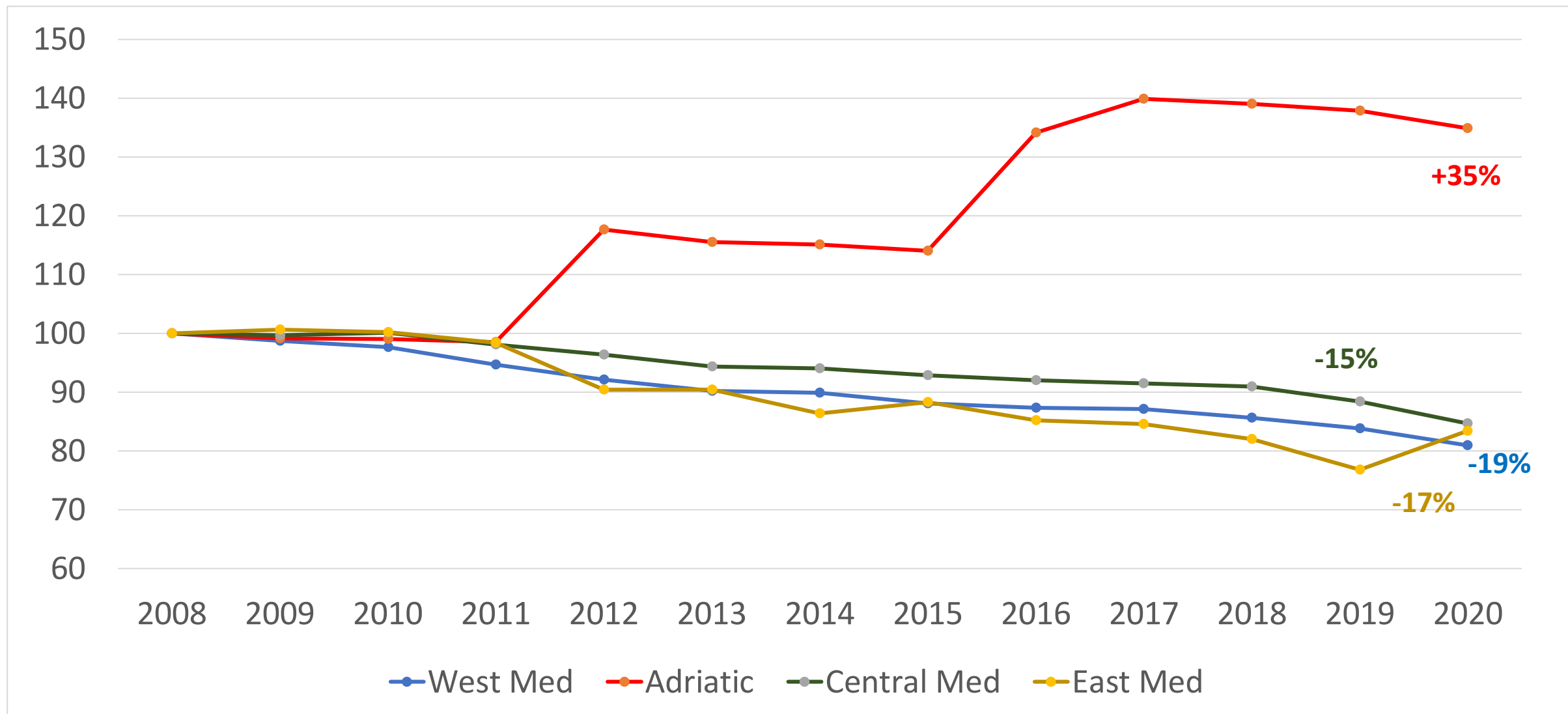
# Graph. 1. Trend of number of active vessels per country (2008=100)

Croatia: var. % 2012/20

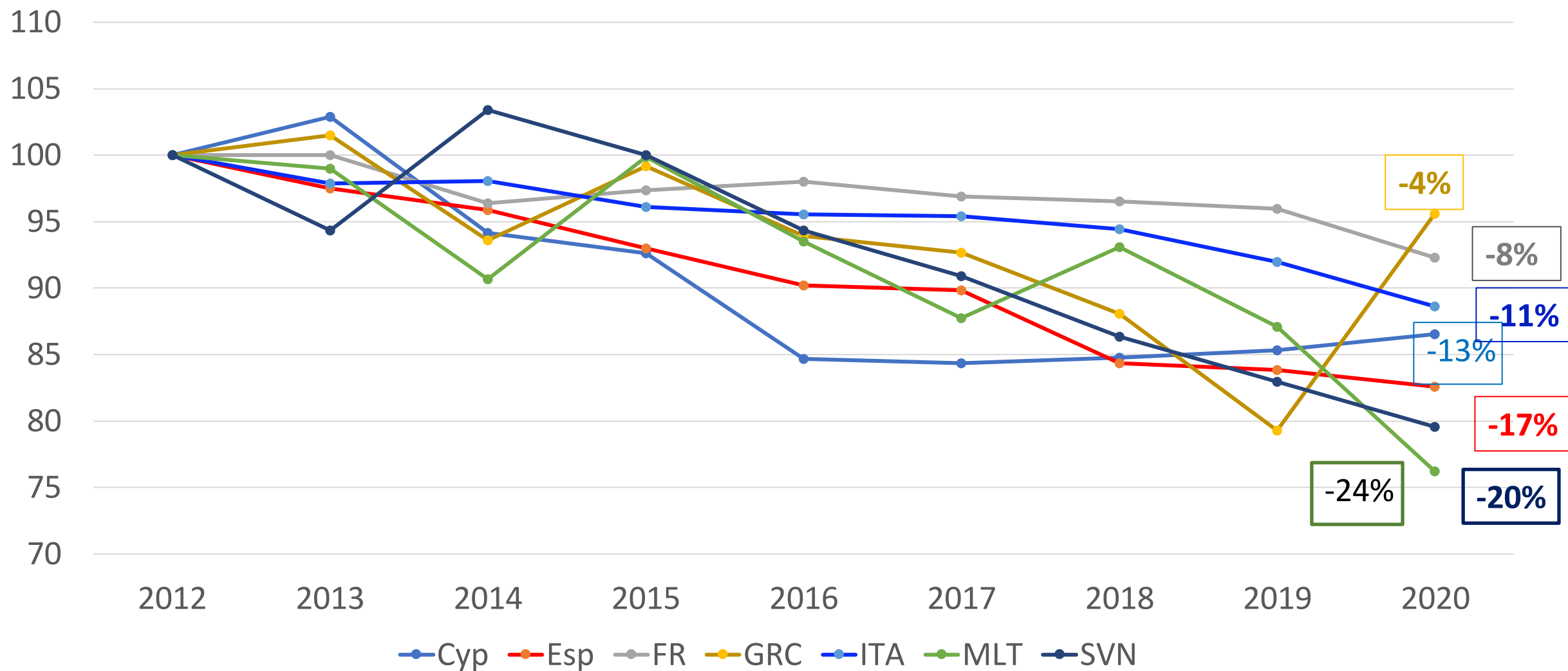


## Graph 2. Trend of active vessels per Med sub-region (n. index 2008=100)

Adriatic Sea: Data transmission from Croatia started in 2012



# Graph 3. Trend of active vessels per country (n. index 2012=100) (except Croatia)

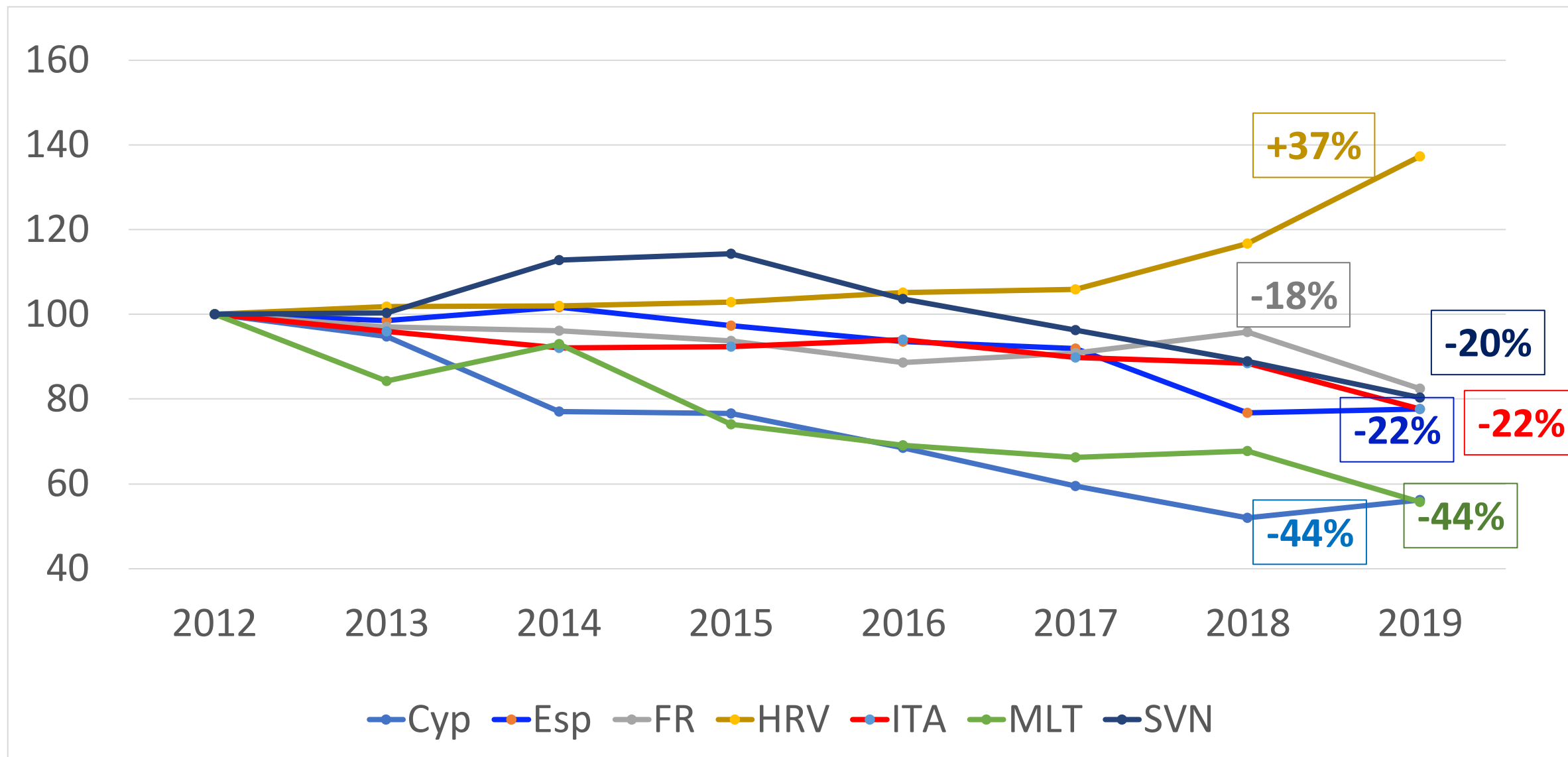


## Tab 2. Average age of vessels (years)

	2008	2009	2010	2011	2012	2013	2014	2015	2016	2017	2018	2019	2020
Cyp	25,1	25,9	24,7	25,1	26,1	30,9	27,8	25,8	28,8	30,2	30,3	29,1	30,2
Esp	30,7	30,9	29,5	31,1	33,8	30,9	32,6	37,5	36,0	39,0	41,1	42,5	43,0
FR	61,2	48,7	40,5	51,1	50,6	49,3	48,9	53,6	50,4	52,3	50,9	53,7	55,9
GRC	28,4	29,3	30,2	31,2	28,7	29,8	27,8	29,4	41,1	42,1	45,3	39,7	34,1
HRV	0,0	0,0	0,0	0,0	42,5	49,8	51,7	47,0	45,4	51,3	42,9	50,5	50,9
ITA	33,9	34,4	34,8	34,9	33,9	33,8	35,3	38,9	38,7	35,9	32,5	35,0	34,0
MLT	28,2	25,7	26,7	28,9	26,9	29,4	28,6	29,3	28,2	42,1	44,1	46,5	45,9
SVN	73,6	66,5	66,7	75,0	71,6	78,1	83,7	78,0	90,2	89,5	93,4	88,4	105,6

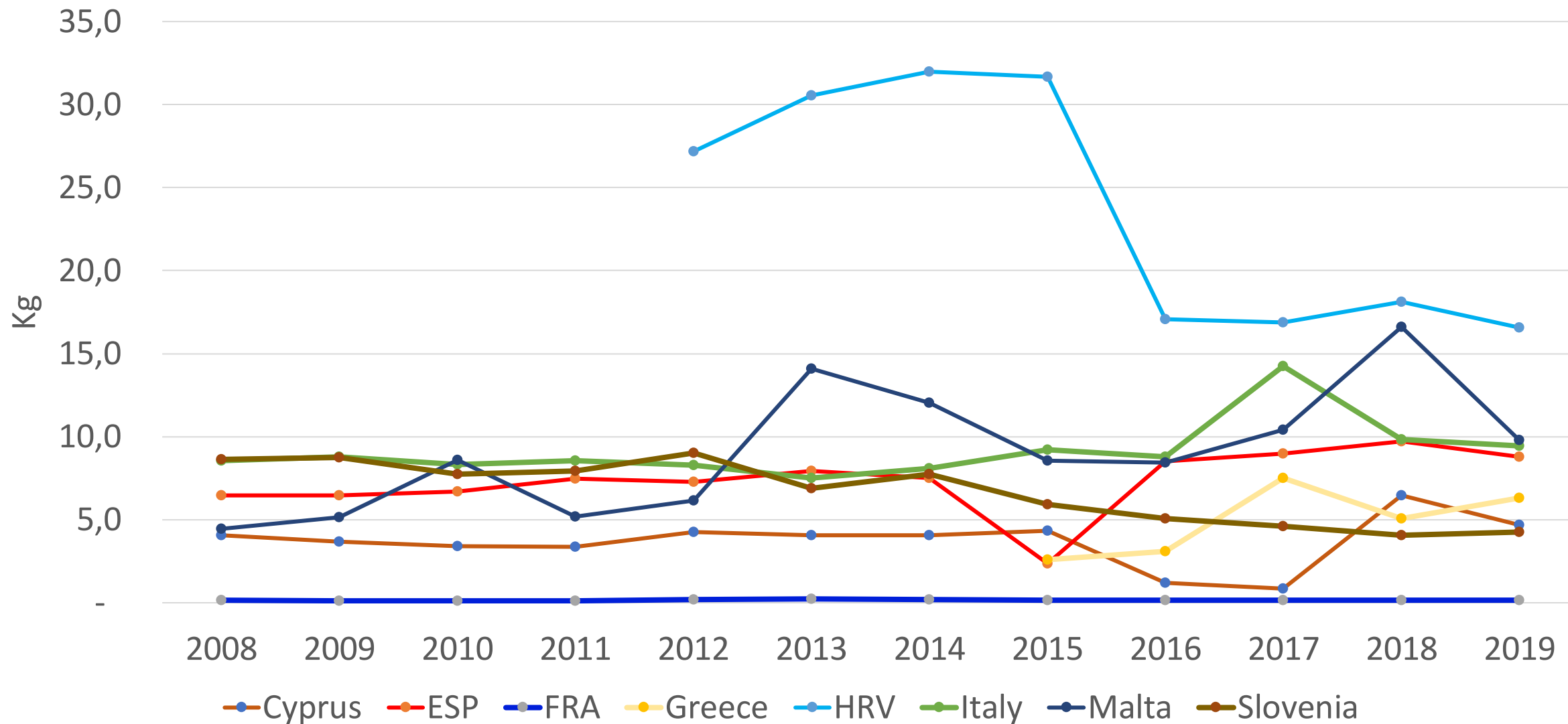


# Graph 4. Trend fishing days per country (n. index 2012=100) (Except Greece)



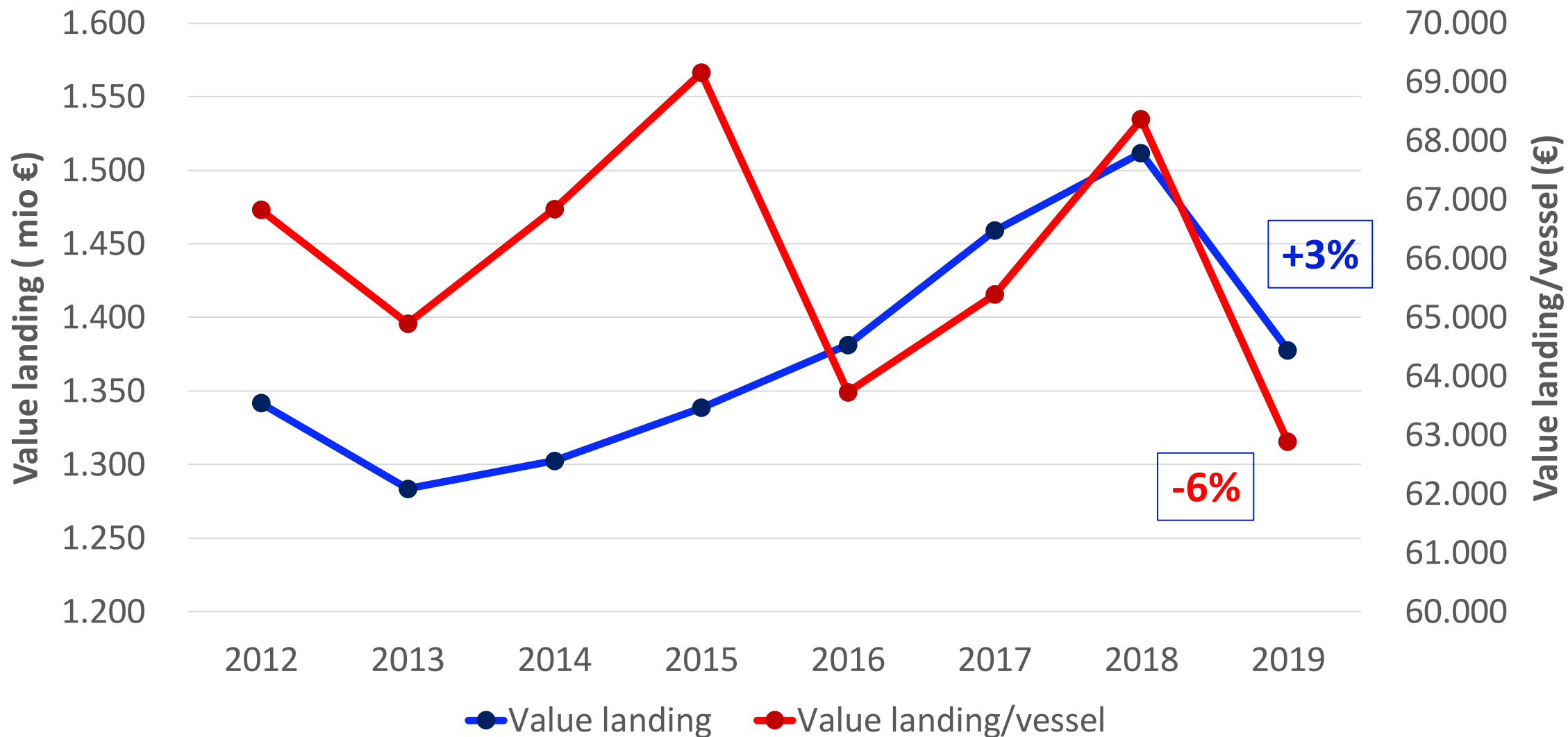
# Graph 5. Trend of catches per unit of effort (Kg)

Malta 2012 adjusted value

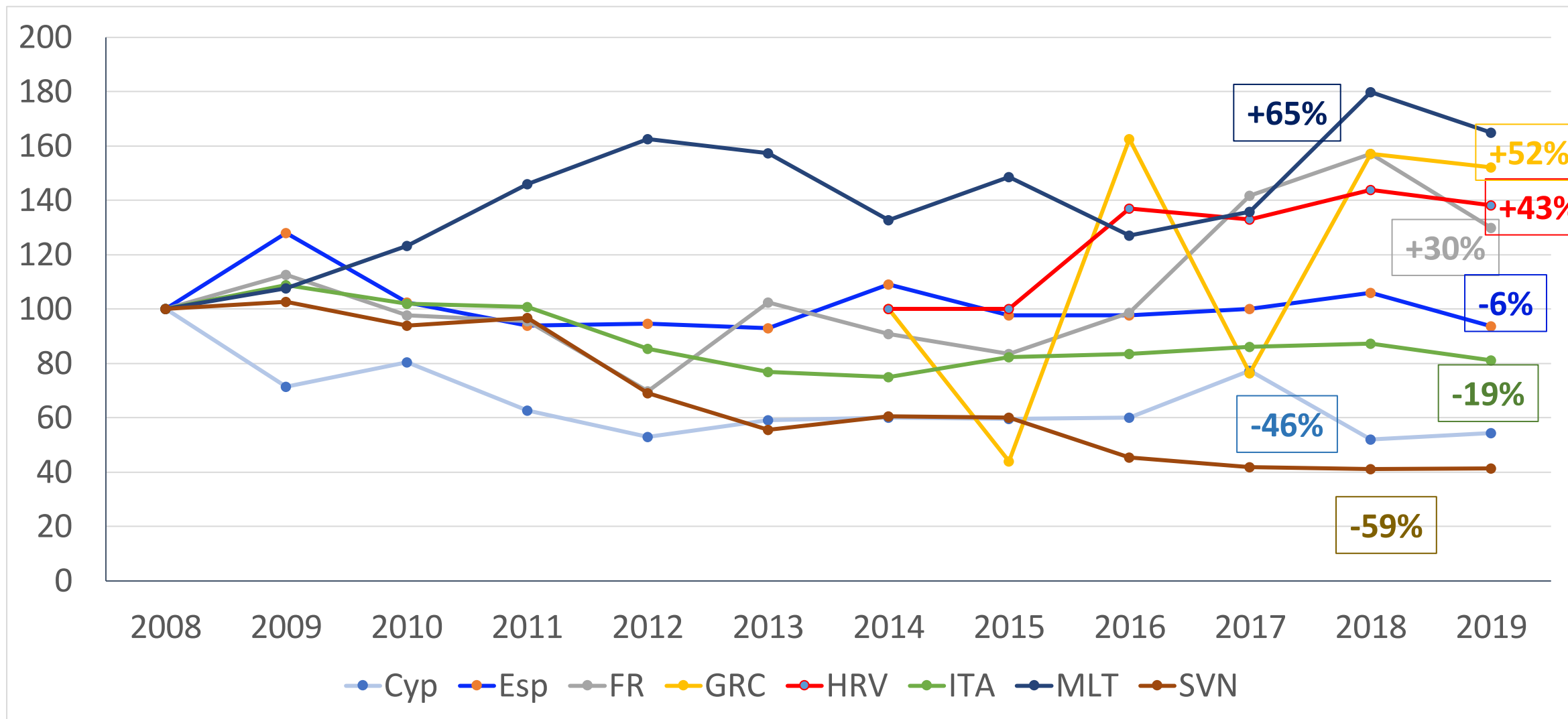


# Graph 6. Trend of landings value in the Med Sea (€)

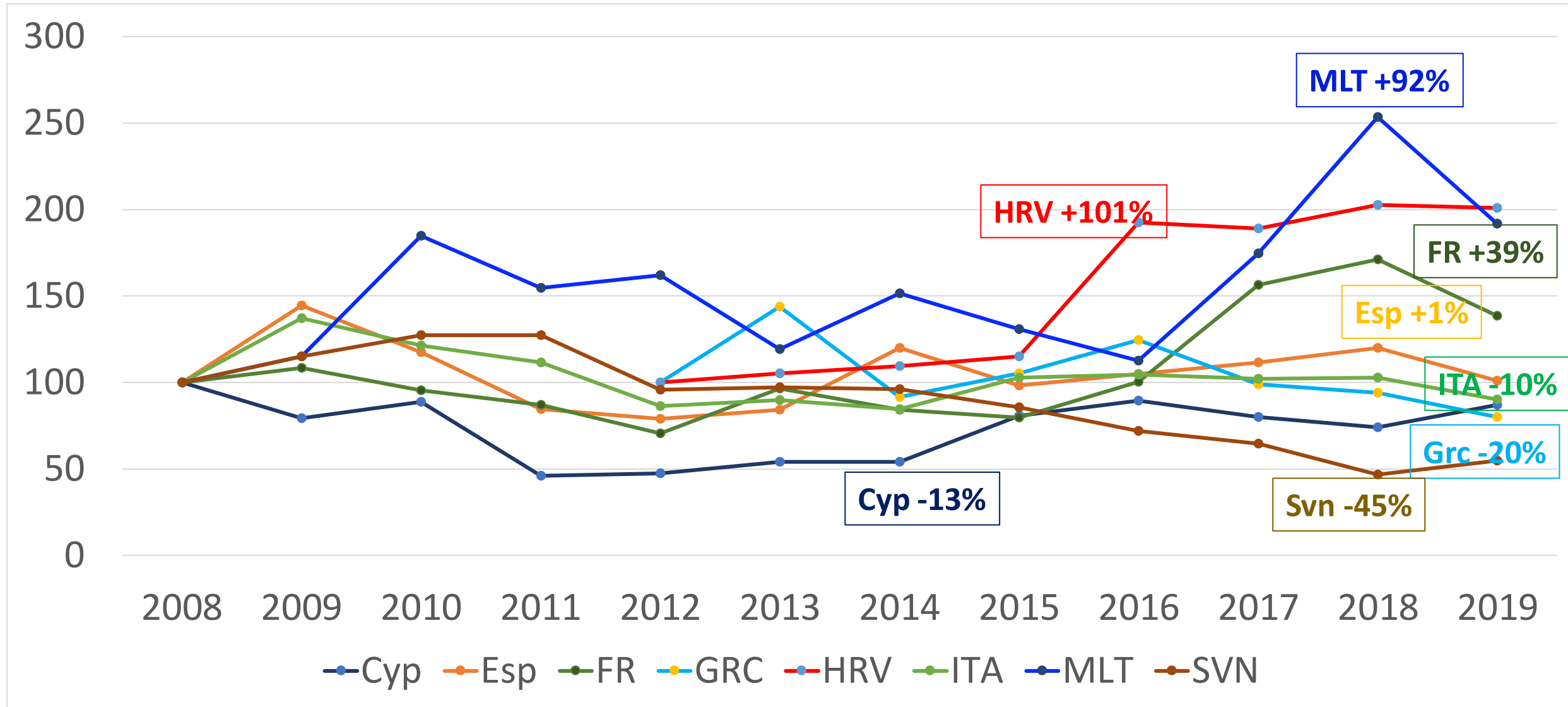
(Except Greece)



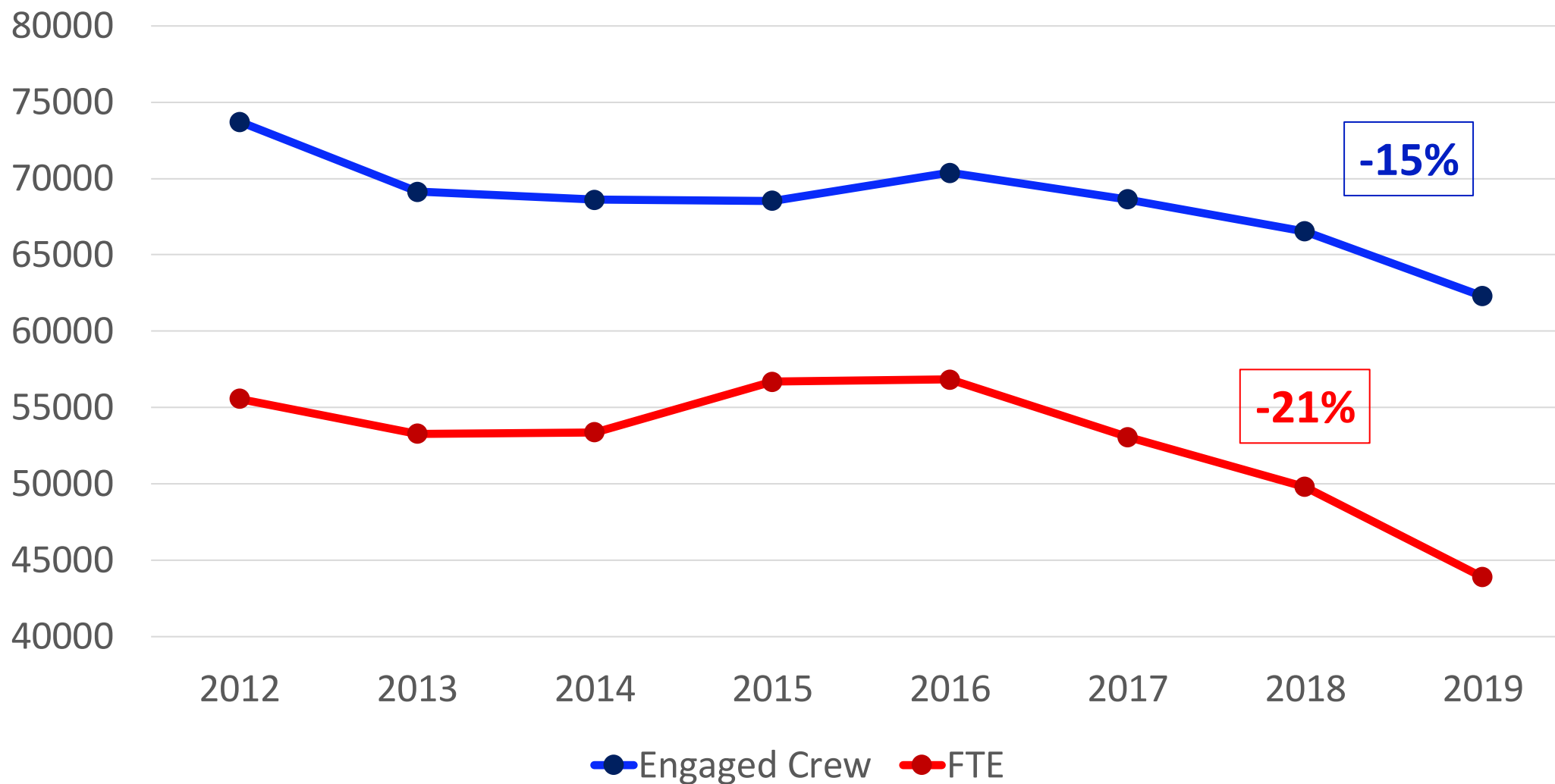
# Graph 7. Landings value per country (n. index 2008=100)



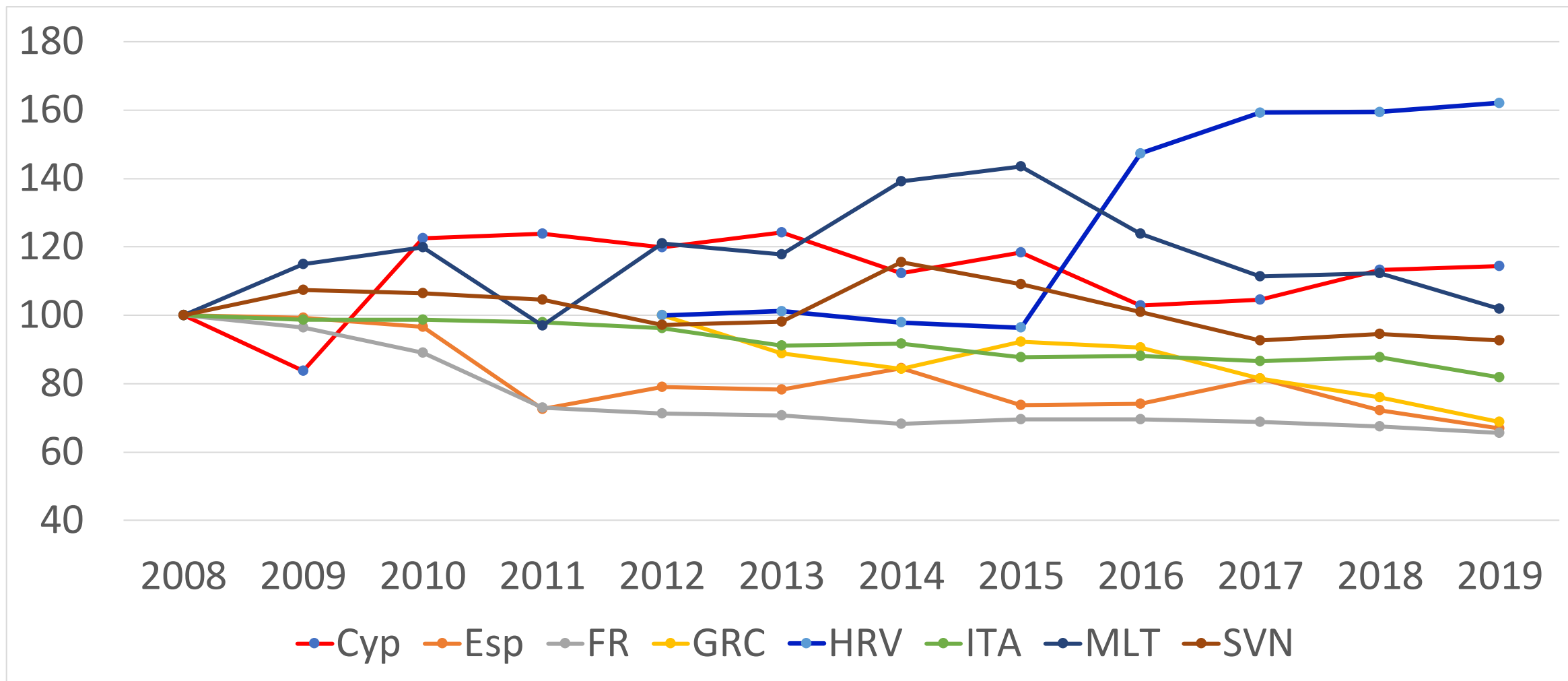
# Graph 8. Employee costs (n. index 2008=100)



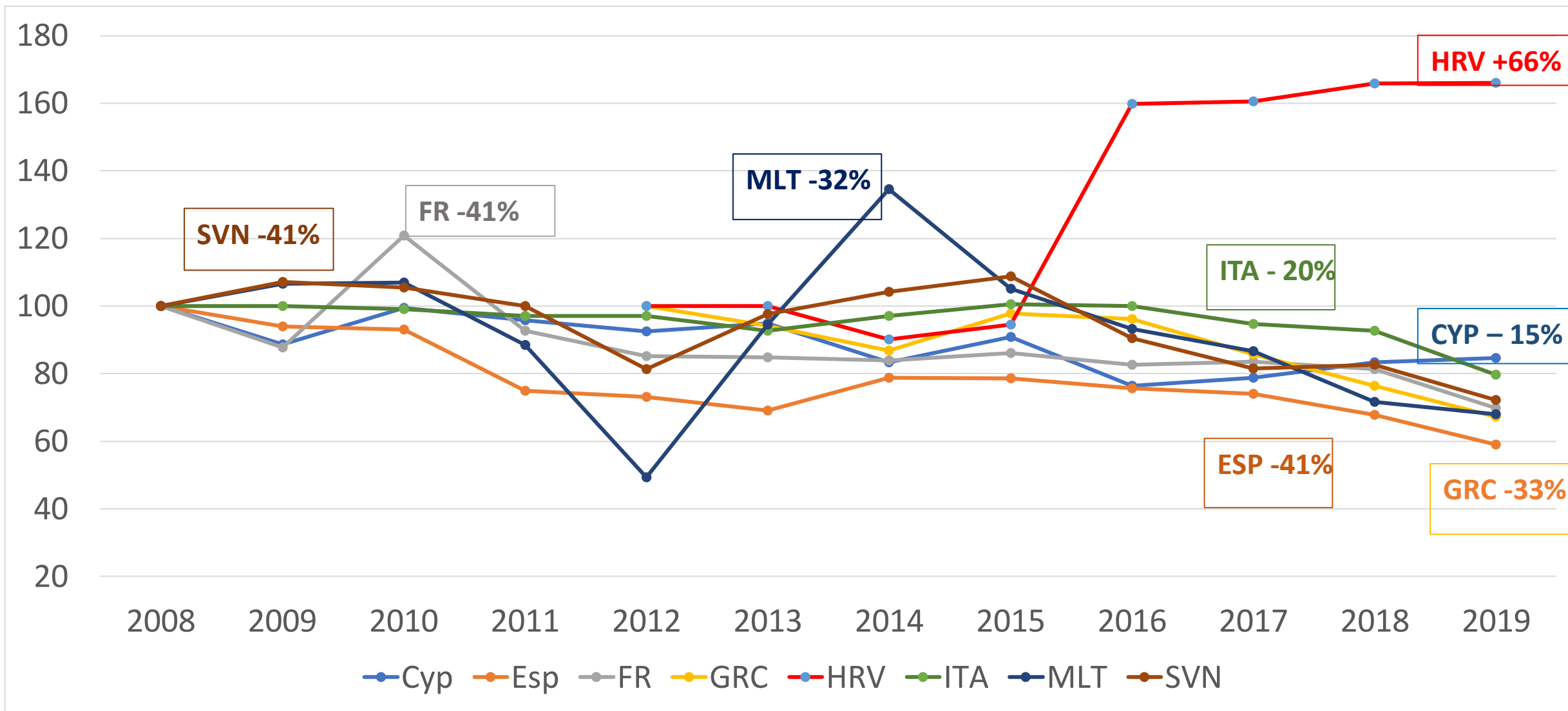
## Graph 9. Trend of the crew and FTE in the Med Sea (n. of people)



# Graph 10. Trend of the crew per Med country (index 2008=100)



# Graph 11. Trend of number of FTE (Full Time Equivalent) (index 2008=100 and Var.% 2008-2019)





## Tabella 3 Trend of the crew per Med country (number)

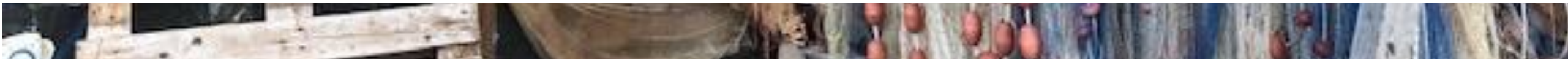
	2008	2009	2010	2011	2012	2013	2014	2015	2016	2017	2018	2019	Var %
Cyp	1085	909	1329	1344	1301	1347	1219	1285	1117	1134	1228	1241	14%
Esp	10508	10437	10160	7628	8312	8216	8883	7746	7778	8564	7588	7028	-33%
FR	2924	2817	2605	2135	2086	2068	1996	2035	2036	2012	1974	1916	-34%
GRC					27558	24486	23232	25407	24975	22471	20923	18983	-31%
HRV					4904	4962	4800	4728	7227	7813	7820	7952	62%
ITA	29349	28967	28982	28724	28217	26758	26932	25767	25863	25415	25759	24038	-18%
MLT	1019	1172	1222	988	1234	1201	1418	1463	1262	1134	1144	1039	2%
SVN	109	117	116	114	106	107	126	119	110	101	103	101	-7%



Co-founded by the  
European Union

Further information  
[segreteria@med-ac.eu](mailto:segreteria@med-ac.eu)

Source: STECF 21-08 - EU Fleet Economic and Transversal  
data\_fleet segment.



# Graph 4. Percentage of inactive vessels on the total per country (%)

